

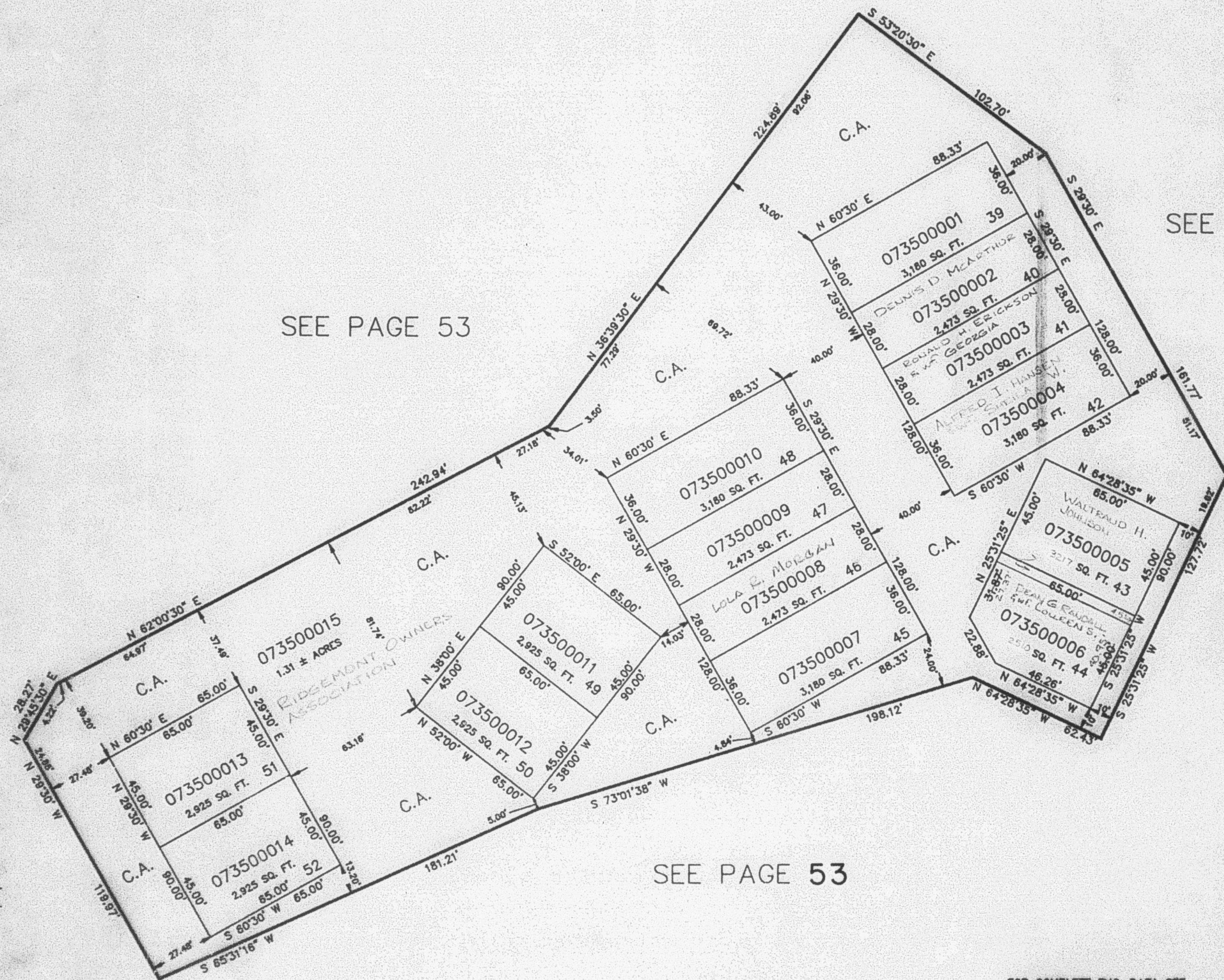
PART OF THE S.E. 1/4 OF SEC. 17, T.5N., R.1W., S.L.B. & M.
RIDGEMONT, A P.R.U.D. PHASE 4

350

TAXING UNIT: 255

IN WASHINGTON TERRACE CITY
 SCALE 1" = 40'

UNLESS OTHERWISE
 SHOWN, ALL LOTS ARE
 OWNED BY: OPHEIKENS & Co., INC.



FOR COMPLETE ENG. DATA SEE
 ORIGINAL DEDICATION PLAT IN
 BOOK 30, PAGE 77 OF RECORDS.